

BEAM TELEMEDICINE SERVICES

Hospitalist Services

Problem

Overnight and 24/7 on-site hospitalists are expensive, while relying on locums or in-patient services by a primary care doctor can be challenging.

Solution

Beam's Advanced Practice Provider (APP) with Telemedicine Physician supervision provides for increased care acuity and coverage flexibility, translating to better patient care and satisfaction, improvement in Management and Education Services for Healthcare (MESH) acuity, reduced transfers, reduced length of stay, and seamless discharges.

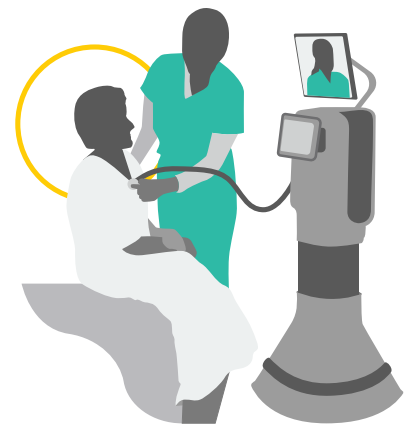
Value Added

Beam's hybrid APP Hospitalist/Telemedicine program results in savings on staffing costs as significant as 55^{*}, nocturnist telemedicine coverage eliminates the cost of overnight on-site providers, and utilizing Beam hospitalists means you don't need to rely on busy primary care providers or expensive locums.



BEAM's services:


- » Onsite physicians
- » Onsite APP/Telemedicine physician hybrid model
- » Telemedicine Nocturnist Coverage
- » Tele-subspecialty Inpatient Consultation
 - » Hospitalist services are tailored to meet facility needs
 - » Staff play an active role in facility administration (inpatient committees, quality improvement committees, etc.)
- » Data analytics



^{*} As reported by a Beam partner hospital from 2016-2017 expenditure.

Contact BEAM today!

 www.beam.healthcare

 888-250-2326

 info@beam.healthcare

